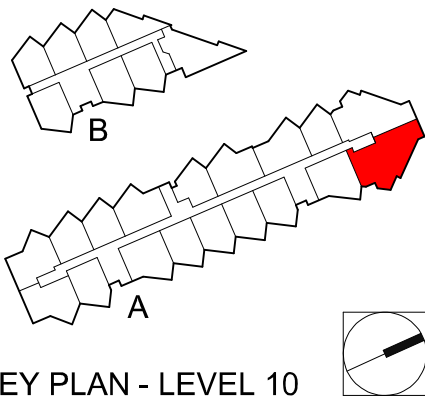
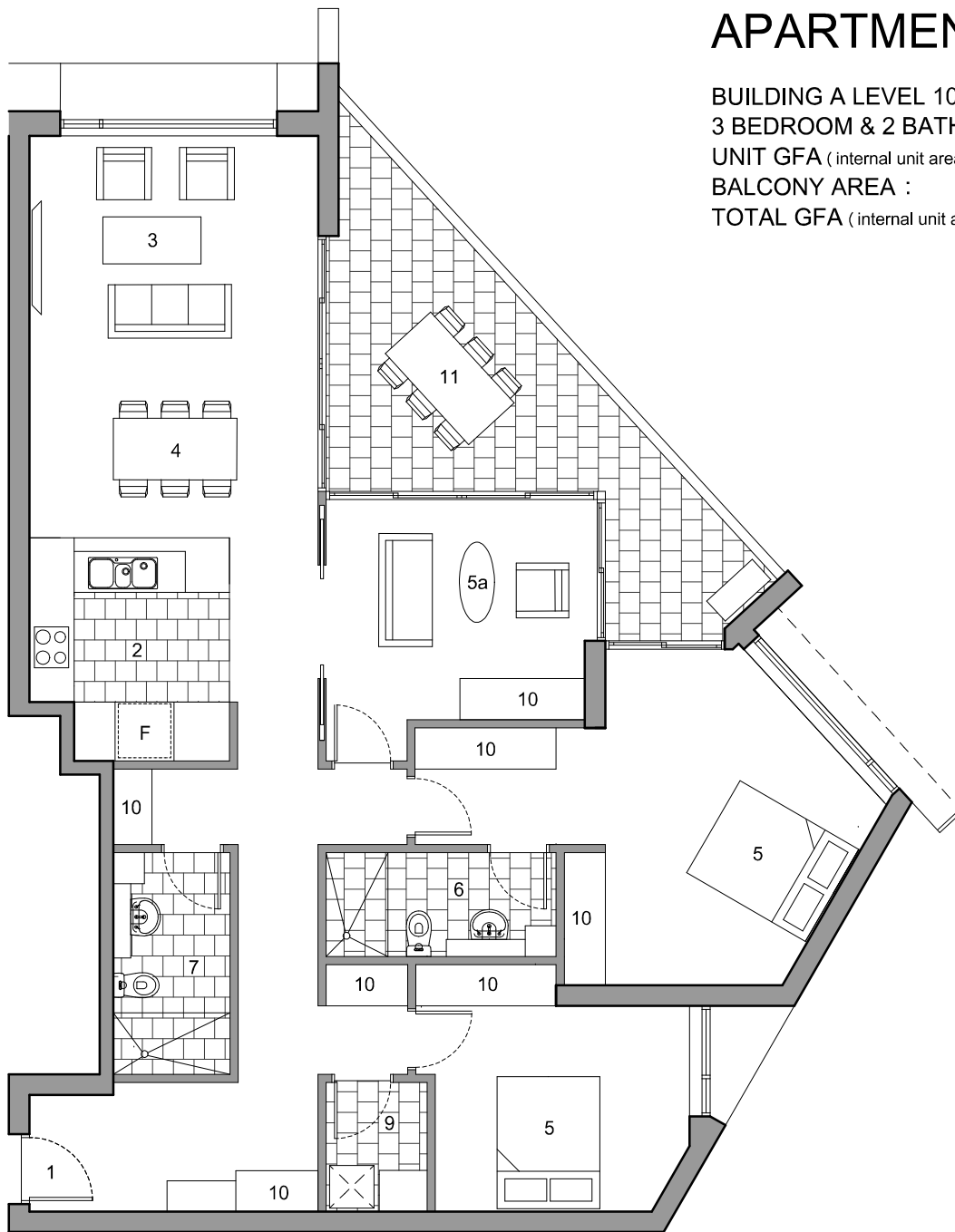


# APARTMENT A10.13

BUILDING A LEVEL 10  
3 BEDROOM & 2 BATH

UNIT GFA ( internal unit area): 133.3m<sup>2</sup>  
BALCONY AREA : 21.3m<sup>2</sup>  
TOTAL GFA ( internal unit and balcony ) : 154.6m<sup>2</sup>



KEY PLAN - LEVEL 10

BUILT IN JOINERY AND INTERNAL FINISHES INDICATIVE ONLY. DESIGN AND EXTENT SUBJECT TO FURTHER ARCHITECTURAL REFINEMENT. ALL LOOSE FURNISHINGS ARE SHOWN FOR ILLUSTRATIVE PURPOSES ONLY AND DO NOT FORM PART OF THE SALE.

PLANS SUBJECT TO DEVELOPMENT APPROVAL BY ACTPLA.

### DISCLAIMER

THE AREA OF EACH UNIT IS CALCULATED TO EXTERNAL WALLS AND CENTRE OF COMMON WALLS IN ACCORDANCE WITH ACTPLA GROSS FLOOR AREA GUIDELINES. INTERNAL DIMENSIONS ARE TAKEN TO WALL FRAMES AND EXCLUDE INTERNAL WALL LININGS. IT IS THE BUYER'S RESPONSIBILITY TO VERIFY AND ENSURE THAT THE DRAWINGS AND INFORMATION OBTAINED FROM THIS DOCUMENT IS THE LATEST VERSION. AALTO APARTMENTS PTY LTD ON BEHALF OF AIIS PTY LTD AS CROWN LESSEE RESERVES THE RIGHT TO CHANGE THE DRAWINGS AND ANY INFORMATION CONTAINED IN THIS DOCUMENT.

- 1 ENTRY
- 2 KITCHEN
- 3 LIVING
- 4 DINING
- 5 BEDROOM
- 5a BEDROOM / MULTIPURPOSE
- 6 ENSUITE
- 7 BATHROOM
- 8 STUDY
- 9 LAUNDRY
- 10 STORAGE
- 11 BALCONY
- 12 COURTYARD

T+AA

Townsend + Associates Architects

**aalto**

A P A R T M E N T S

DESIGN + LIFESTYLE + LOCATION

APARTMENT No.  
A10.13

SCALE  
1:100 @ A4

DATE  
OCTOBER 2011

DWG No.  
SP A1013

**LJ Hooker** Project Marketing