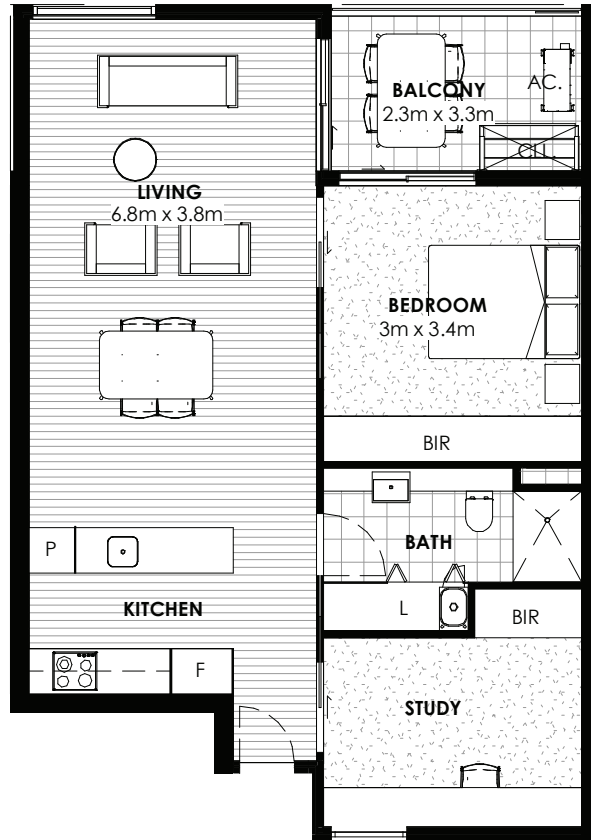
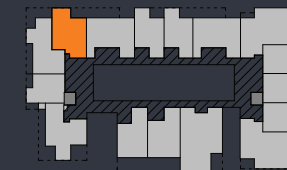


# Banksia



**Unit Type 06**  
**Unit Number 17, 33, 49**  
**Unit Area 70m<sup>2</sup>**  
**Balcony 8m<sup>2</sup>**  
**Total Area 78m<sup>2</sup>**



Bowman St  
**Level 1-3**

**Legend**

F	Fridge
LDY	Laundry
P	Pantry
L	Linen
BIR	Robe
R	Riser
AC	AC Unit
CLL	Clothes Line



NORTH



All plans are subject to Development Application Approval. The floor plan layout may be subject to minor amendments and dimensional changes to suit final working drawings and grid layouts which are subject to the Building Code of Australia. Dimensions shown are to structural faces. The area of each unit is calculated using ACTPLA guidelines. It is the buyer's responsibility to verify and ensure that the drawings displayed are the latest versions available. The furniture layout and sizes portrayed in this floor plan are indicative only and should not be relied upon by the buyer. MIN EER 6.8